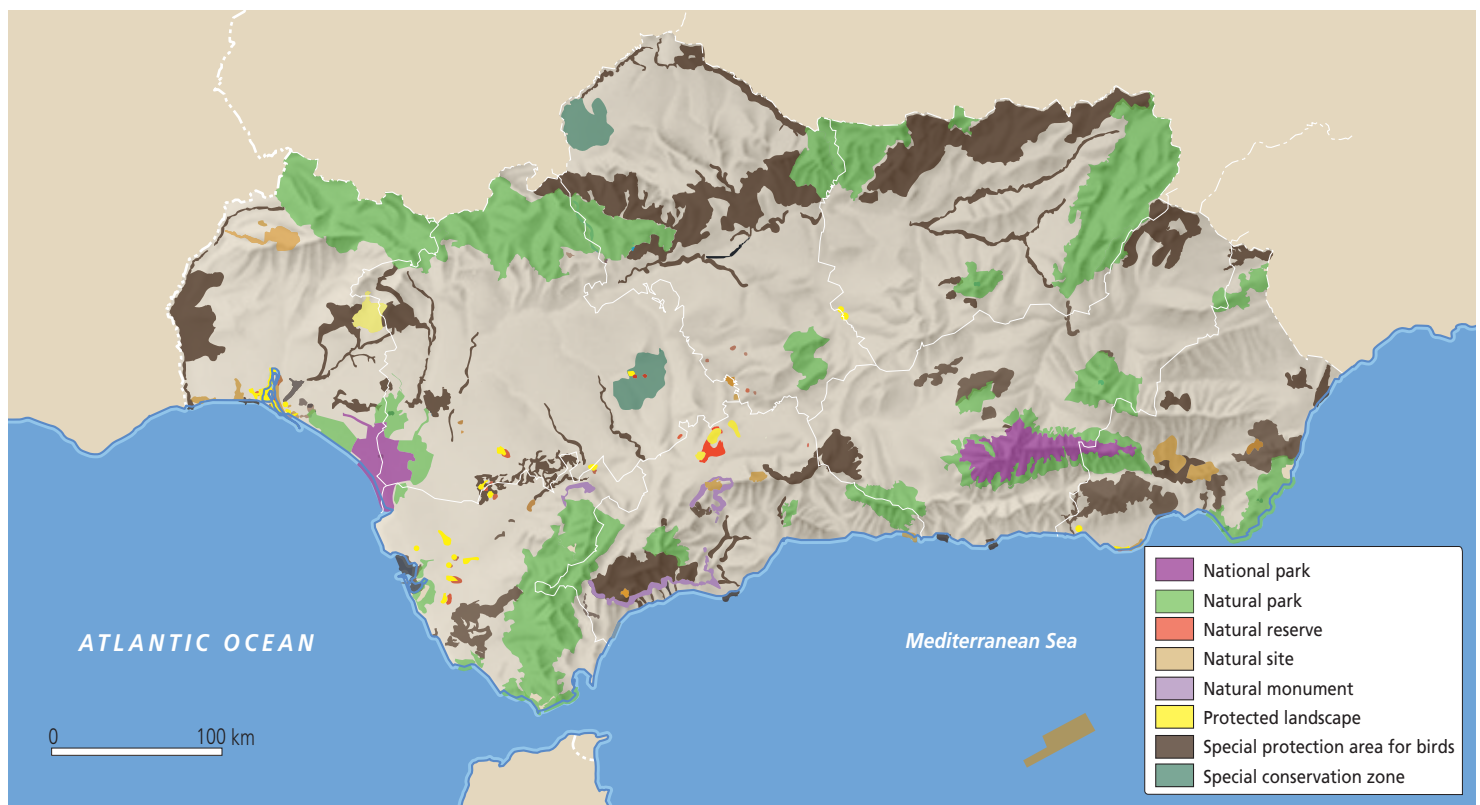


Protected spaces in Andalucía


The **Network of Protected Natural Areas of Andalucía (RENPA)** includes **252** protected inland and marine areas. These account for about half of the total area of Andalucía. The most important of these are:


- **national parks**, including Sierra Nevada (Granada) and Doñana (Huelva).
- **natural parks**, which are mainly found in the mountain ranges.
- **natural landscapes**, which contain protected flora, fauna and geological formations or are particularly beautiful.
- **natural monuments**, which are places that need special protection because of their vulnerability.
- **protected landscapes**, which are places of specific cultural or aesthetic significance, such as the Corredor Verde del Guadiamar and Río Tinto.
- **periurban parks**, which are natural spaces that are close to urban areas.
- **wetlands**, many of which are protected by the Ramsar Convention.

Many of these spaces are part of **international protection schemes** such as Natura 2000 and UNESCO.



CLIL activities

- 27 In your notebook, use the map to describe the locations of different types of protected spaces. Have you visited any of them?
- 28  Listen and list the rules for visitors to the protected space.

- 29  Why are rules for visitors to protected spaces important? What could the consequences be of not controlling tourism in these areas?

If tourism isn't controlled, it might result in/lead to...